

SPACE AVAILABLE

707 EAGLEVIEW BLVD. AT EAGLEVIEWSM

12,836 SQ FT THIRD FLOOR
1,855 SQ FT FIRST FLOOR
CLASS A OFFICE SPACE
AVAILABLE IMMEDIATELY
COMPETITIVE TERMS



BUILDING FEATURES

- Contemporary precast concrete and glass exterior
- 370 parking spaces (4/1,000 sf)
- Two story lobby with architectural staircase
- Fully sprinklered
- Energy management system
- Access control system
- Individually tailored tenant suites
- Ample tenant identification
- 24/7 property management

EagleviewSM is an exceptional place to do business. 707 Eagleview Boulevard is an 83,320 square foot class A four story suburban office building which is located only 1/4 mile from the PA Turnpike. Its high visibility at the corporate center's main entrance makes this exquisite property an ideal home for prominent companies. A two-story atrium lobby with a tranquil water feature sets the stage for an enjoyable and productive work environment. 707 Eagleview Boulevard also offers the convenience of Eagleview Town Center amenities. These amenities include the Brickside Grille, Wellington Square Book Shop, Balance Hair Spa, Simply Yoga, Shaving Grace Barbers, Town Center Pharmacy, Pediatric Care of Chester County, Main Line Lighting & Design, Lace Em Up, The Wine Store and the Lionville YMCA with daycare. Ample parking welcomes employees and visitors, and nearby shops and services create a work environment that is both efficient and enjoyable.

**DISTINCTIVE
COMMERCIAL
PROPERTIES**



610.458.1900
www.hankingroup.com

EAGLEVIEWSM

SPRING VALLEY

MORGANTOWN

SPACE AVAILABLE

707 EAGLEVIEW BLVD. AT EAGLEVIEWSM



To schedule a tour or for more information, please contact:

JACK PURCELL

jack.purcell@hankingroup.com

STACY MARTIN

stacy.martin@hankingroup.com

SEAN CALHOON

sean.calhoon@hankingroup.com

THE HANKIN GROUP
707 EAGLEVIEW BOULEVARD
EXTON, PA 19341
www.hankingroup.com

P **610.458.1900**
F **610.458.0764**

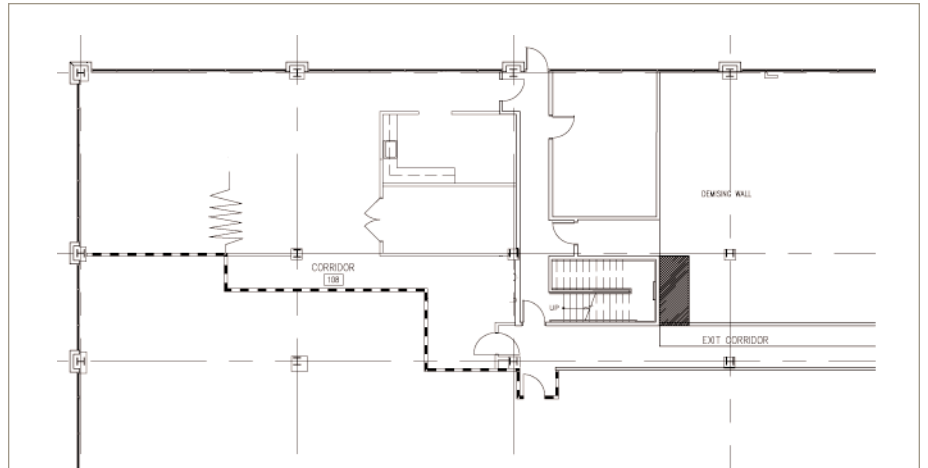


FROM PHILADELPHIA

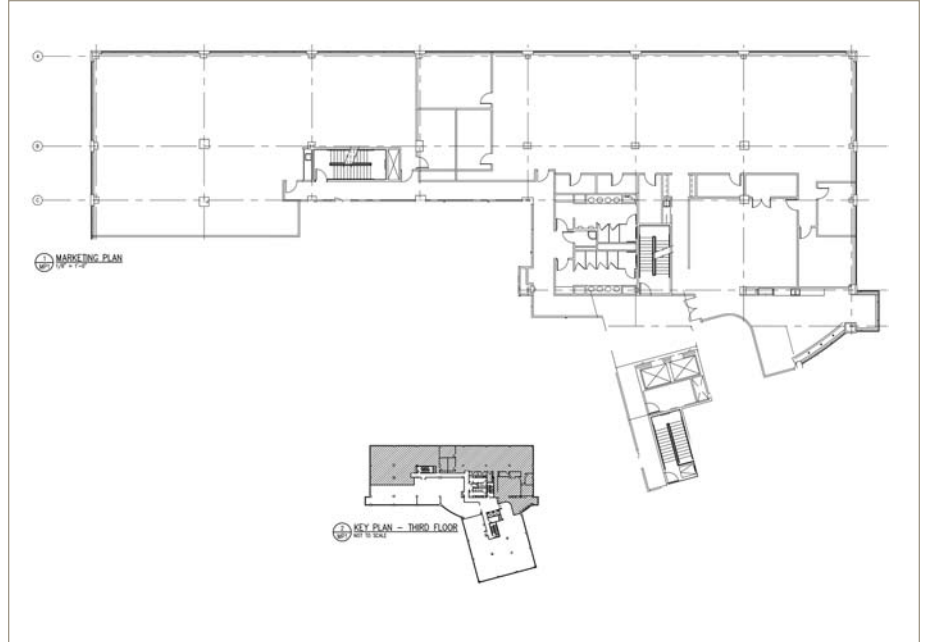
Take Rt. 76 West to the PA Turnpike. Take the PA Turnpike West to exit 312. Follow Rt. 100 North to first traffic light. Stay to the right and follow the jughandle to cross over Rt. 100 onto Eagleview Boulevard. 707 Eagleview Blvd. is the first building on the left.

FROM WILMINGTON

Take Rt. 202 North to Rt. 100 North. When you have passed the PA Turnpike entrance you will come to a traffic light. Stay to your right and follow the jughandle to cross over Rt. 100 onto Eagleview Boulevard. 707 Eagleview Blvd. is the first building on the left.



1,855 SQ FT



12,836 SQ FT

WEATHERSTONE

HAYWOOD

CHANDLER