

SPACE AVAILABLE

400 EAGLEVIEW BLVD AT EAGLEVIEWSM

AVAILABLE IMMEDIATELY
COMPETITIVE TERMS



BUILDING FEATURES

- Contemporary brick & glass exterior
- 140 parking spaces
- 20 foot clear height
- Fully sprinklered
- Dock and drive-in doors available
- Typical column spacing is 30'x40'
- Ample tenant identification
- Adhered EPDM roofing system
- 24/7 on-site property management

EagleviewSM is an exceptional place to do business. 400 Eagleview Boulevard is an 87,000 square foot class A suburban flex building located only 1/4 mile from the PA Turnpike and offers the convenience of Eagleview Town Center amenities. These amenities include the Brickside Grille, Wellington Square Book Shop, Balance Hair Spa, Wellington Square Curiosities, LaVista Pizza & Grille, Invitations by Design, Shaving Grace, Town Center Pharmacy, Caramella Candy, The Wine Store and the YMCA with daycare. Ample parking welcomes employees and visitors, and nearby shops and services create a work environment that is both efficient and enjoyable.

DISTINCTIVE
COMMERCIAL
PROPERTIES



THE HANKIN GROUPSM

610.458.1900

www.hankingroup.com

EAGLEVIEWSM

SPRING VALLEY

MORGANTOWN

400 EAGLEVIEW BLVD AT EAGLEVIEWSM



To schedule a tour or for more information, please contact:

JACK PURCELL

jack.purcell@hankingroup.com

STACY MARTIN

stacy.martin@hankingroup.com

SEAN CALHOON

sean.calhoon@hankingroup.com

THE HANKIN GROUP
707 EAGLEVIEW BOULEVARD
EXTON, PA 19341
www.hankingroup.com

P 610.458.1900
F 610.458.0764

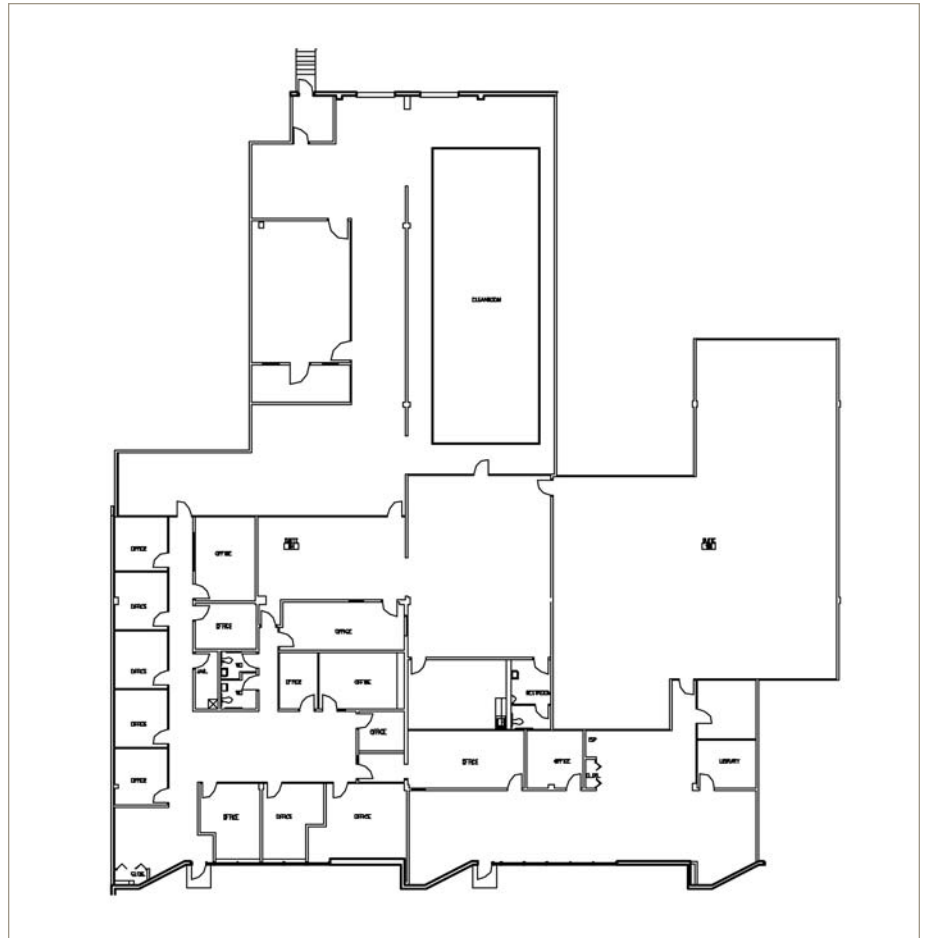


FROM PHILADELPHIA

Take Rt. 76 West to the PA Turnpike. Take the PA Turnpike West to exit 23/312. Follow Rt. 100 North to first traffic light. Stay to the right and follow the jughandle to cross over Rt. 100 onto Eagleview Blvd. Go straight and 400 Eagleview Blvd. is on the right.

FROM WILMINGTON

Take Rt. 202 North to Rt. 100 North. When you have passed the PA Turnpike entrance you will come to a traffic light. Stay to your right and follow the jughandle to cross over Rt. 100 onto Eagleview Blvd. Go straight and 400 Eagleview Blvd. is on the right.



KEY PLAN

